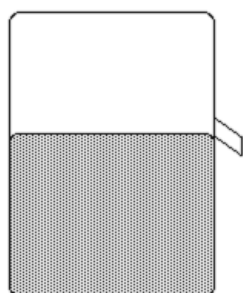


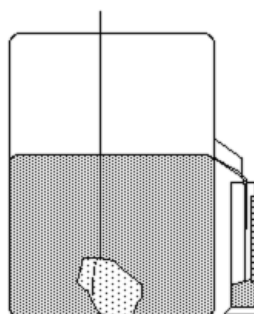
## How to Determine the Volume of an Irregularly-Shaped Solid

You can determine the volume of an irregularly shaped solid by measuring the volume of water that the object displaces.

**Materials.** overflow container, graduated cylinder, water, string, sample to be tested.



Overflow container filled to starting point.



Water displacement from submerged object.

Start by filling the overflow container up to the outlet hole so that some water drains out the hole. When the excess water has drained out the container should be filled to just below the opening. Carefully place an empty graduated cylinder under the opening. Tie a string around the sample and slowly lower it into the water. When you have completely lowered the object into the water, measure the amount of water that has run into the graduated cylinder. To repeat the measurement, remove the sample and the graduated cylinder and refill the overflow container as above. Empty and replace the graduated cylinder and repeat the above process.